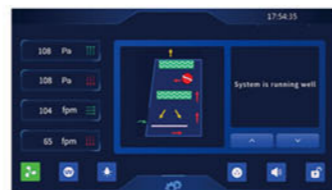




NSF Certified Class II A2 Biological Safety Cabinet



Display for NA series



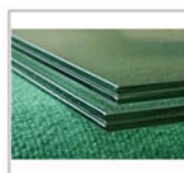
Display for GL series

Color Touch Screen
Touch operation, real-time and clearer display of various values and appointment timing function.

E-mail: export@biobase.com
www.biobase.cc / www.biobase.com



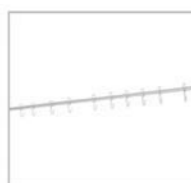
Exhaust Thimble canopy (Optional)



Front Window
Two-layer laminated toughened glass >6mm, Anti UV



Footmaster Caster
Universal caster with brake and leveling feet.



Stainless Steel I.V. Bar with 10 hooks



SS Water Tap & Gas Tap



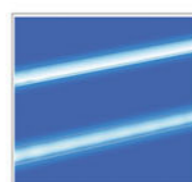
Waterproof Socket



Wind Speed Sensor



Work Zone Unibody design



UV Lamp
Emission of 253.7 nanometers for most efficient decontamination.

ADVANTAGE

1. Motorized front window.
2. 7-inch large touch color display: touch operation, real-time and clearer display of various values of the safety cabinet, dynamic air flow pattern diagram, fault alarm sound and light prompt.
3. The power-on password can be set to prevent mis-operation by irrelevant personnel.
4. EC Fan, automatically adjust the wind speed.
5. With power-off memory function, the state before power-off will be restored after power-on and there will be visual prompts and alarms.
6. The integrated design of the operation area makes it easy to disassemble and clean.
7. The cabinet is separated from the base. The height of the adjustable base can be customized.
8. Interlocking function: UV lamp and front window; UV lamp and fan; fan and front window.
9. It has the function of appointment timing, which can automatically set the time of starting and shutting down the safety cabinet and the running time of ultraviolet lamps, fan and sockets.
10. The front window closes the trigger signal, so that the sterilization and disinfection function of the ultraviolet lamp is normally turned on.
11. The one-piece hand resting surface has a larger contact area with the arm and is more comfortable. air speed adjustable with filter block.

TECHNICAL PARAMETERS

Model	BSC-4FA2	BSC-3FA2-GL BSC-3FA2-NA	BSC-4FA2-GL BSC-4FA2-NA	BSC-6FA2-GL BSC-6FA2-NA
External Size(W*D*H)	1383*775*2220mm	1087*775*2220mm	1383*775*2220mm	1873*775*2240mm
Internal Size(W*D*H)	1210*600*660 mm	910*600*660 mm	1210*600*660 mm	1700*600*660 mm
Work Surface Height	762mm	762mm	762mm	782mm
Max Opening	470mm			
Tested Opening	Safety height 200mm (8")		Safety height 254mm (10")	
Airflow	Inflow	462m³/h (272cfm)	445m³/h(259cfm)	587m³/h(346cfm)
	Downflow	65%: 863m³/h (507cfm)	60%: 649m³/h(382cfm)	60%: 863m³/h(507cfm)
	Volume	35%: 462m³/h (272cfm)	40%:445m³/h(259cfm)	40%: 587m³/h(346cfm)
Exhaust	40%:445m³/h(259cfm)	40%:587m³/h(346cfm)	40%: 824m³/h(485cfm)	
Front Window	Motorized. Two-layer laminated toughened glass ≥6mm. Anti UV.			
ULPA Filter	Two, 99.9995% efficiency at 0.12μm, filter life indicator.			
Filter Guard Type	Aluminum alloy frame, glass fiber filter paper			
Noise	NSF 49≤67dB			
Illumination	≥1000Lux			
Display	Color Touch Screen			
Waterproof Socket	Two, Total consumption: ≤500W			
Tap	Water tap*1, Gas tap *1			
Ground Resistance	≤ 0.10Ω			
Power Supply	AC230V, 50/60Hz; AC115V, 60Hz, Full load Amps: 9A, BTU/Hr: 1689			
Consumption	500W	400W	500W	700W
Alarm	Abnormal airflow velocity; Filter replacement; Front window at unsafe height; High filter pressure alarm			
Motor	EC motor, 115V& 230V acceptable, Speed adjustable, high efficiency and low power consumption			
Material	Working area: 304stainless steel Frame and Decorative Plate: cold-rolled steel with anti-bacteria power coating			
UV Lamp	30W	20W	30W	40W
	Germicidal UV lamp, Emission of 253.7 nanometers for most efficient decontamination			
Illuminating Lamp	20W*2	10W*2	20W*2	23W*2
	LED lamp			
Standard Accessory	LED lamp*2, UV lamp*2, Base stand, SS water tap*1, SS gas tap*1, Drain valve, Waterproof sockets*2, Stainless Steel IV Bar with 10 hooks,Remote control			
Optional Accessory	Armrest, Airflow tester, Formalin fumigation sterilizer,Infrared sterilizer, Electric height adjustable base stand			
Package Size (W*D*H)	1540*1080*1900mm	1240*1060*1900mm	1540*1080*1900mm	2020*1080*1900mm
Gross Weight	330kg	280kg	330kg	410kg